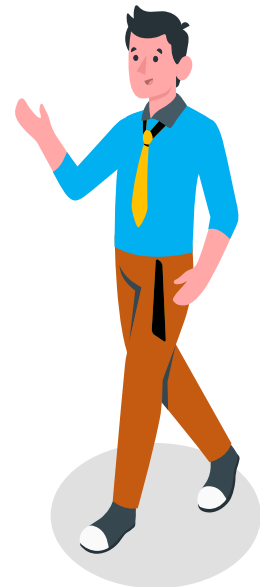


Petit.iot

Smart Toilet

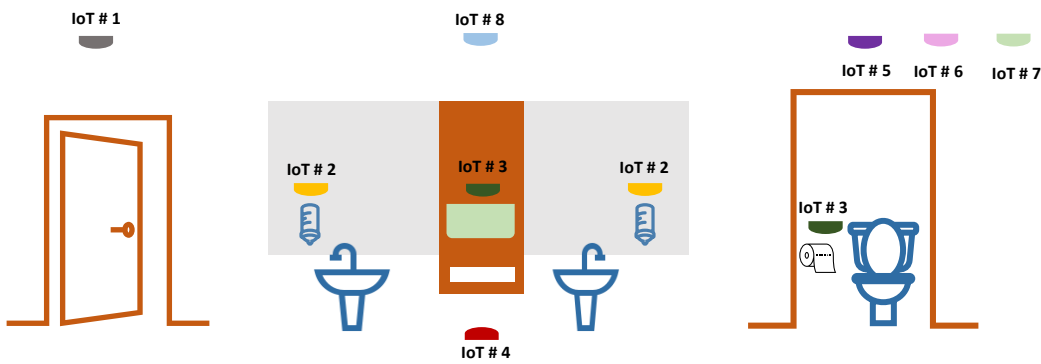


What are the benefits of Smart Toilet

It's well known that typical toilets face issues of inefficiency and overspending. **Smart Toilet** tackle these issues, make use and integrating technology by **Internet of Things (IoT)** into the smart toilet's key internal systems and workflow to develop the sustainability. Based on system can plan for schedule working foreseeable ,also easy to handle any adhoc case.

How does Smart Toilet work

Smart Toilet practice IoT data , to make key decisions and actions based on the situation that helps the toilet to perform better overall in terms of efficiency and hygiene quality control. Therefore, becoming more cost and time-efficient are benefit by stakeholders. According the system, alarm notification direct to front end operators to react any cases of toilet.



IoT #	Label	Description
1		People count for IN and OUT
2		Soap dispenser with level sensor
3		Towel paper/Toilet paper sensor
4		Water leakage sensor
5		Fall detection and occupancy sensor
6		Ammonia sensor (NH3)
7		Hydrogen Sulphide sensor (H2S)
8		Gas sensor

Characteristics of fall detection

Objective:

Falling detection in toilets is a critical risk for life safe. Especially when people stay in toilet cubicle or accessible toilet, once when fainting (caused by natural or accident), unfortunately in most cases there may be just the faller alone here, faller will not easy be found or noticed by anyone.

To avoid accidents occur, **Petit.iot** smart toilet IoT deploy an innovative solution for detect any possible falling and fainting occur in toilets, due to privacy issue, our solution is **NOT** using any visual cameras equipments and components.

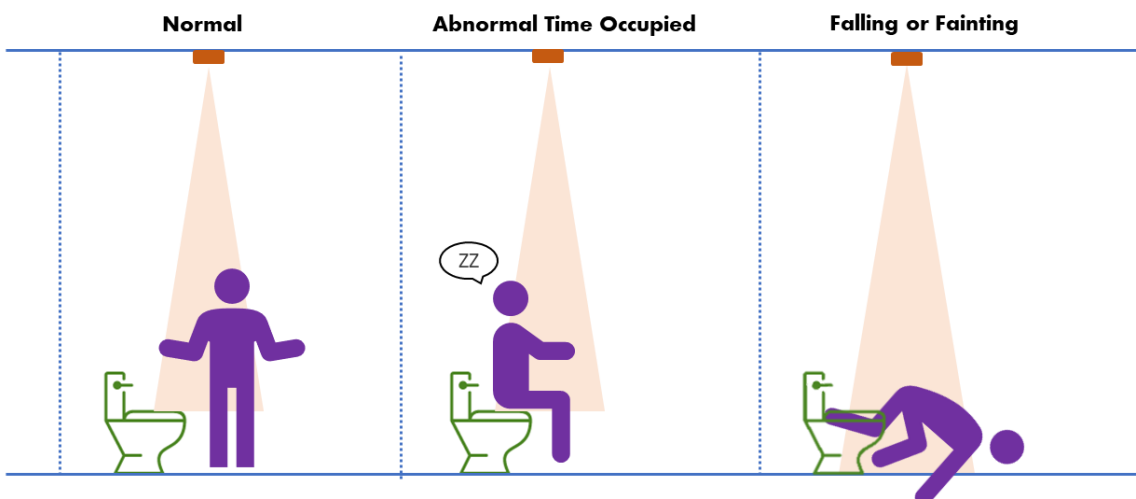
Technology:

Using overhead ToF (Time of Flight) distance sensor (by means of any Ultrasound / LiDAR / Radar Sensor) for distinguish any chance of people falling or/and fainting inside the toilets and accessible toilets. With AI (Machine Learning Model Operationalization Management) for foundation design, it can increase accuracy rate and minimizing the false alarms.

Workflow and Status:

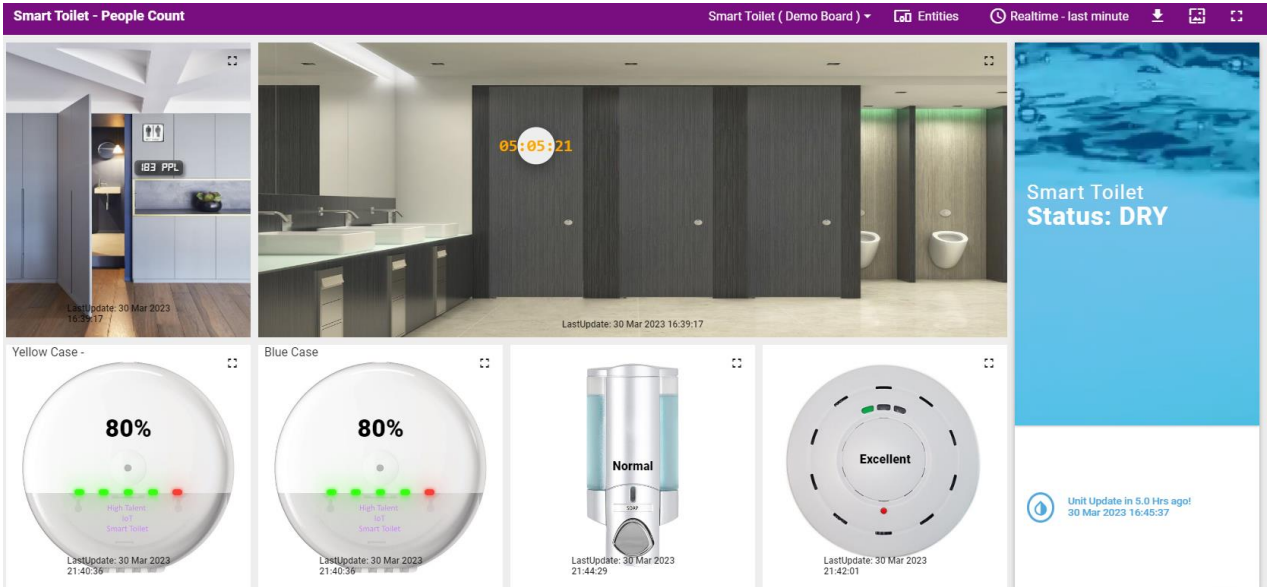
There are three common statuses for operator monitor,

1. Normal
2. Abnormal Time Occupied
3. Falling or Fainting



Realtime glance visibility dashboard

Dashboard makes even the most complex data easy to read and interpret and provides on-demand visibility and insight.



Easy to start-up

The Petit.iot Smart Toilet system provides support for both on-site and cloud-based operations. Users can conveniently access data dashboard metrics through a web portal, eliminating the need to store large amounts of system data on their personal computers or mobile devices.

Technology benefit

Petit.iot products are committed to sustainability, incorporating eco-friendly practices throughout their product life cycles and minimizing the use of hazardous materials. The systems are designed to scale up or down flexibly, avoiding version discrepancies and thus reducing potential waste. With a robust API and adherence to open standards like **BACnet** and **Modbus**, these products can easily interface with various BMS, CCMS, SCADA, and other ecosystem connections.

